



AGENDA

January 18, 2022

ROSEVILLE INDEPENDENT REDISTRICTING COMMISSION

6:00 p.m.

Martha Riley Library
1501 Pleasant Grove Blvd.
Roseville, California
www.roseville.ca.us/IRC

If you need disability-related accommodation to participate in this meeting, please contact the City at:
Voice: 916-774-5200 TDD: 916-774-5220.
Requests must be made as early as possible.

THE CITY OF ROSEVILLE WELCOMES YOUR PARTICIPATION

If an agenda item is open to public comment, such public comment shall be addressed to the chair of the meeting.

Public Comment - Speakers have three minutes under Public Comment to speak on issues that are not listed on the agenda and are within the City's jurisdiction. The Brown Act does not permit any action or discussion on items not listed on the agenda.

Agenda Items - Speakers have five minutes to address items that are listed on the agenda.

Americans with Disabilities Act - Notify the City Clerk or Secretary at least 72 hours in advance if special assistance is required to participate in a meeting including the need of auxiliary aids or services.

Audio/Visual Presentations - If making a presentation regarding an agenda item, audio/visual materials must be submitted to the City Clerk or Secretary at least 72 hours in advance.

Roseville City Clerk 311 Vernon Street, Roseville, CA 916-774-5200 TDD 916-774-5220

- 1. CALL TO ORDER**
- 2. ROLL CALL**
- 3. PLEDGE OF ALLEGIANCE**
- 4. PUBLIC COMMENTS**

5. REPORTS/PRESENTATIONS

5.1. Overview of Draft Maps and Preliminary Redistricting Plan

Memo from Senior Deputy City Attorney Joe Mandell to provide an informational update and overview of the six (6) draft maps for consideration by the Independent Redistricting Commission and the Preliminary Redistricting Plan and Draft Map Analysis filed with the City Clerk on December 22, 2021.

CONTACT: Joe Mandell 916-774-5325 jmandell@roseville.ca.us

5.2. Draft Map and Community of Interest Public Testimony

Senior Deputy City Attorney Joe Mandell and Assistant City Clerk Helen Dreyer recommending the Independent Redistricting Commission receive public testimony on the six (6) draft maps and from communities of interest in accordance with Section 11.10 of Article XI of the Roseville Charter.

CONTACT: Joe Mandell 916-774-5325 jmandell@roseville.ca.us
Helen Dreyer 916-774-5356 hdreyer@roseville.ca.us

5.3. Upcoming Redistricting Meeting Schedule

Senior Deputy City Attorney Joe Mandell and Assistant City Clerk Helen Dreyer to provide an informational update on upcoming redistricting public meeting dates and an overview of final map adoption schedule for January 24, 2022.

CONTACT: Joe Mandell 916-774-5235 jmandell@roseville.ca.us
Helen Dreyer 916-774-5356 hdreyer@roseville.ca.us

6. ADJOURNMENT



ROSEVILLE INDEPENDENT REDISTRICTING COMMUNICATION

Title: Overview of Draft Maps and Preliminary Redistricting Plan

Contact: Joe Mandell 916-774-5325 jmandell@roseville.ca.us

Meeting Date: 1/18/2022

Item #: 5.1.



ROSEVILLE INDEPENDENT REDISTRICTING COMMUNICATION

Title: Draft Map and Community of Interest Public Testimony
Joe Mandell 916-774-5325 jmandell@roseville.ca.us
Contact: Helen Dreyer 916-774-5356 hdreyer@roseville.ca.us

Meeting Date: 1/18/2022
Item #: 5.2.

ATTACHMENTS:

Description

Public Testimony

Six, Katrina

From: Dreyer, Helen
Sent: Tuesday, January 11, 2022 11:25 AM
To: City Clerk
Subject: FW: Mapping
Attachments: Map C-2.pdf

From: Einar Maisch <einar.maisch@gmail.com>
Sent: Sunday, January 9, 2022 10:02 AM
To: Mandell, Joseph <JMandell@roseville.ca.us>
Cc: Dreyer, Helen <hdreyer@roseville.ca.us>
Subject: Re: Mapping

EXTERNAL: This email originated from outside of the organization. Do not click on any links or open attachments unless you recognize the sender and know the content is safe.

I also have suggestions for edits to Map C, which are shown on the attached edit of old Map 8. I don't believe that the areas proposed to be moved into the green area (now District 5), and into the purple area (now District 2) do not contain any residents. The changes are simply to conform the District boundary to logical lines and increase compactness.

Einar

On Dec 29, 2021, at 11:13 AM, Mandell, Joseph <JMandell@roseville.ca.us> wrote:

Hi Einar -

I'm not familiar enough with using the online mapping tool, but I know there were a few links and videos on the Redistricting page that are "How to" guides. They may not be there now that the public map submittal timeframe is over, but they were there recently. The District Scenario Modeler tool may be disabled at this point.

If you have general ideas or streets/neighborhoods that you are trying to move around, you can email that information to me and Helen Dreyer and we can put it in the record as public comment and I could see if our demographer can mock up the ideas or analyze them to see how the various statistics change. Everyone is back in the office on Monday and I have a meeting about Redistricting on Tuesday with the demographer, so if you have specifics that you would like to discuss, feel free to email them over. Thanks and have a great rest of your holiday.

Joe

On Dec 28, 2021, at 12:50 PM, Einar Maisch <einar.maisch@gmail.com> wrote:

EXTERNAL: This email originated from outside of the organization. Do not click

on any links or open attachments unless you recognize the sender and know the content is safe.

I have not tries to submit a map so I'm not familiar with how to try. But I think that Maps A and B can be improved. Is it possible to use the mapping tool to make changes? And if so can you provide a little guidance on how to do it?

Thank,
Einar

Total population: 147,969

Number of districts: 5

Ideal population per district: 29,594

Edit mode

Filter by district

Choose population data source

Total Deviation

Draw new boundaries

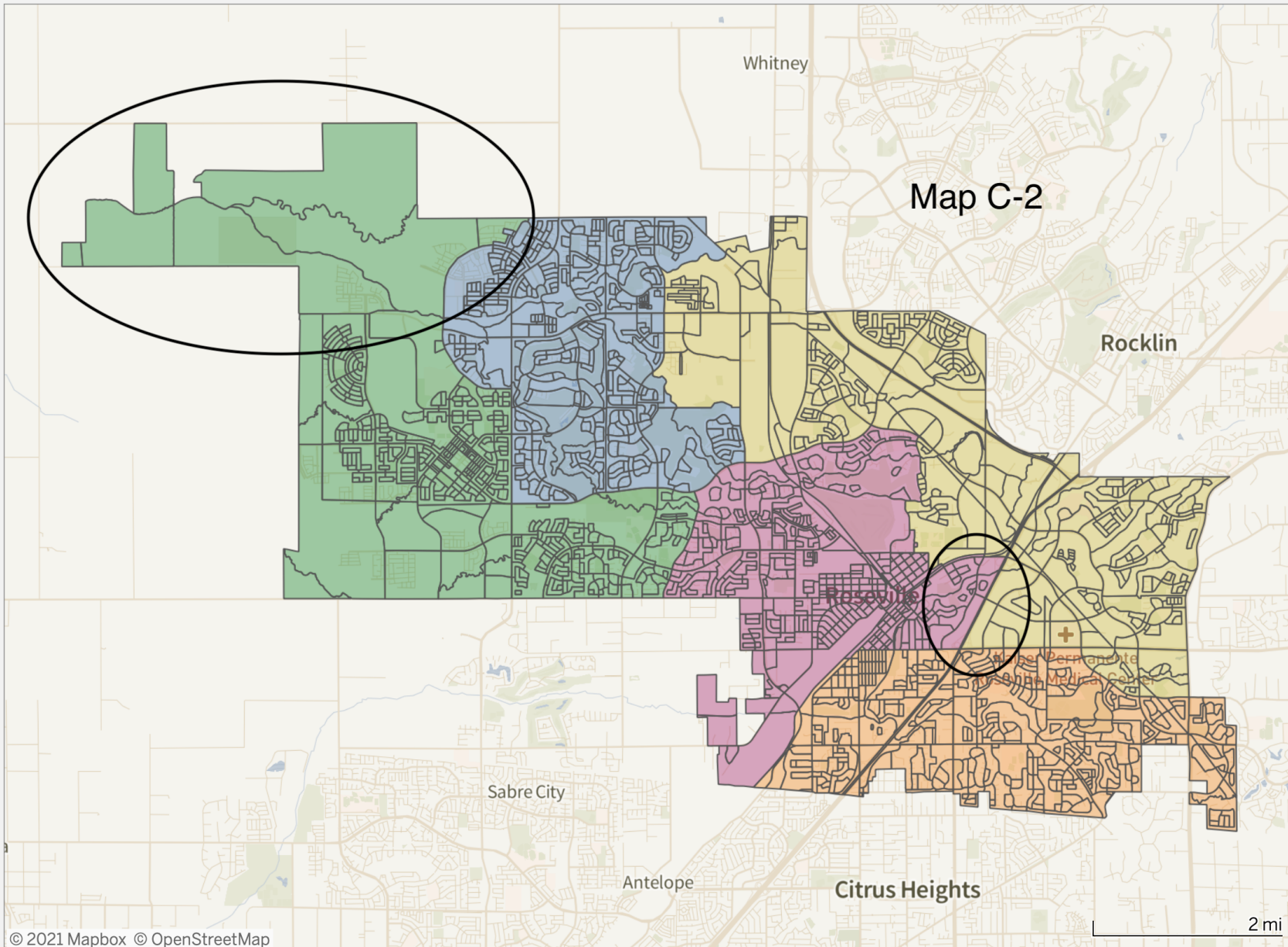
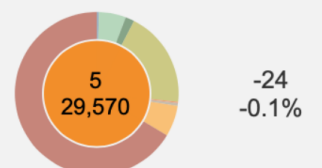
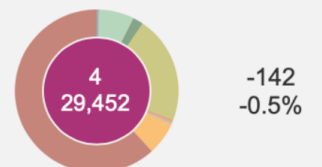
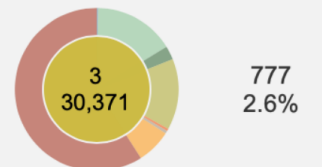
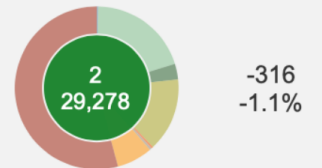
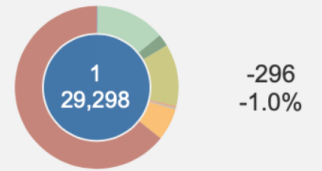
(All)

Total population

3.7%

This map focuses on creating compact, contiguous districts. This map has a very low total deviation (4.4%). This allows for planned growth to be shared between the western two districts (numbered 1 and 2 on this map).

To the extent possible, natural and physical boundaries are used to create district boundaries and communities of interest are respected.



Six, Katrina

From: Dreyer, Helen
Sent: Tuesday, January 11, 2022 11:36 AM
To: City Clerk
Subject: FW: Mapping
Attachments: Map B-2.pdf

From: Einar Maisch <einar.maisch@gmail.com>
Sent: Sunday, January 9, 2022 9:29 AM
To: Mandell, Joseph <JMandell@roseville.ca.us>
Cc: Dreyer, Helen <hdreyer@roseville.ca.us>; David Breninger <dbreninger@surewest.net>; Richard Roccucci <richard@roccucci.com>
Subject: Re: Mapping

EXTERNAL: This email originated from outside of the organization. Do not click on any links or open attachments unless you recognize the sender and know the content is safe.

I would like the Redistricting Commission to consider a change to Map B that would move the Sierra Vista neighborhood from District 3 to District 2. I was able to edit the original Map 6 with the proposed change to make sure it did not exceed the maximum allowable variation in population. Please see the attached pdf file.
Einar

On Dec 29, 2021, at 11:13 AM, Mandell, Joseph <JMandell@roseville.ca.us> wrote:

Hi Einar -

I'm not familiar enough with using the online mapping tool, but I know there were a few links and videos on the Redistricting page that are "How to" guides. They may not be there now that the public map submittal timeframe is over, but they were there recently. The District Scenario Modeler tool may be disabled at this point.

If you have general ideas or streets/neighborhoods that you are trying to move around, you can email that information to me and Helen Dreyer and we can put it in the record as public comment and I could see if our demographer can mock up the ideas or analyze them to see how the various statistics change. Everyone is back in the office on Monday and I have a meeting about Redistricting on Tuesday with the demographer, so if you have specifics that you would like to discuss, feel free to email them over. Thanks and have a great rest of your holiday.

Joe

On Dec 28, 2021, at 12:50 PM, Einar Maisch <einar.maisch@gmail.com> wrote:

EXTERNAL: This email originated from outside of the organization. Do not click

on any links or open attachments unless you recognize the sender and know the content is safe.

I have not tries to submit a map so I'm not familiar with how to try. But I think that Maps A and B can be improved. Is it possible to use the mapping tool to make changes? And if so can you provide a little guidance on how to do it?

Thank,
Einar

Total population: 147,969

Number of districts: 5

Ideal population per district: 29,594

Edit mode

Draw new boundaries

Filter by district

(All)

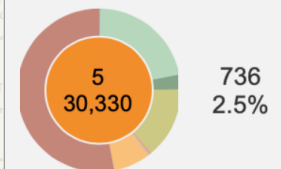
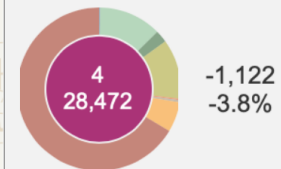
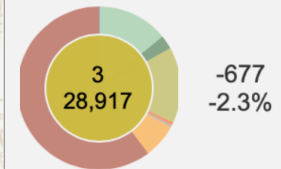
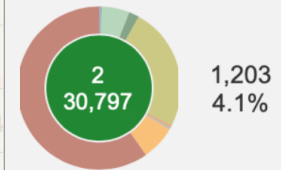
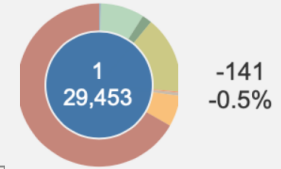
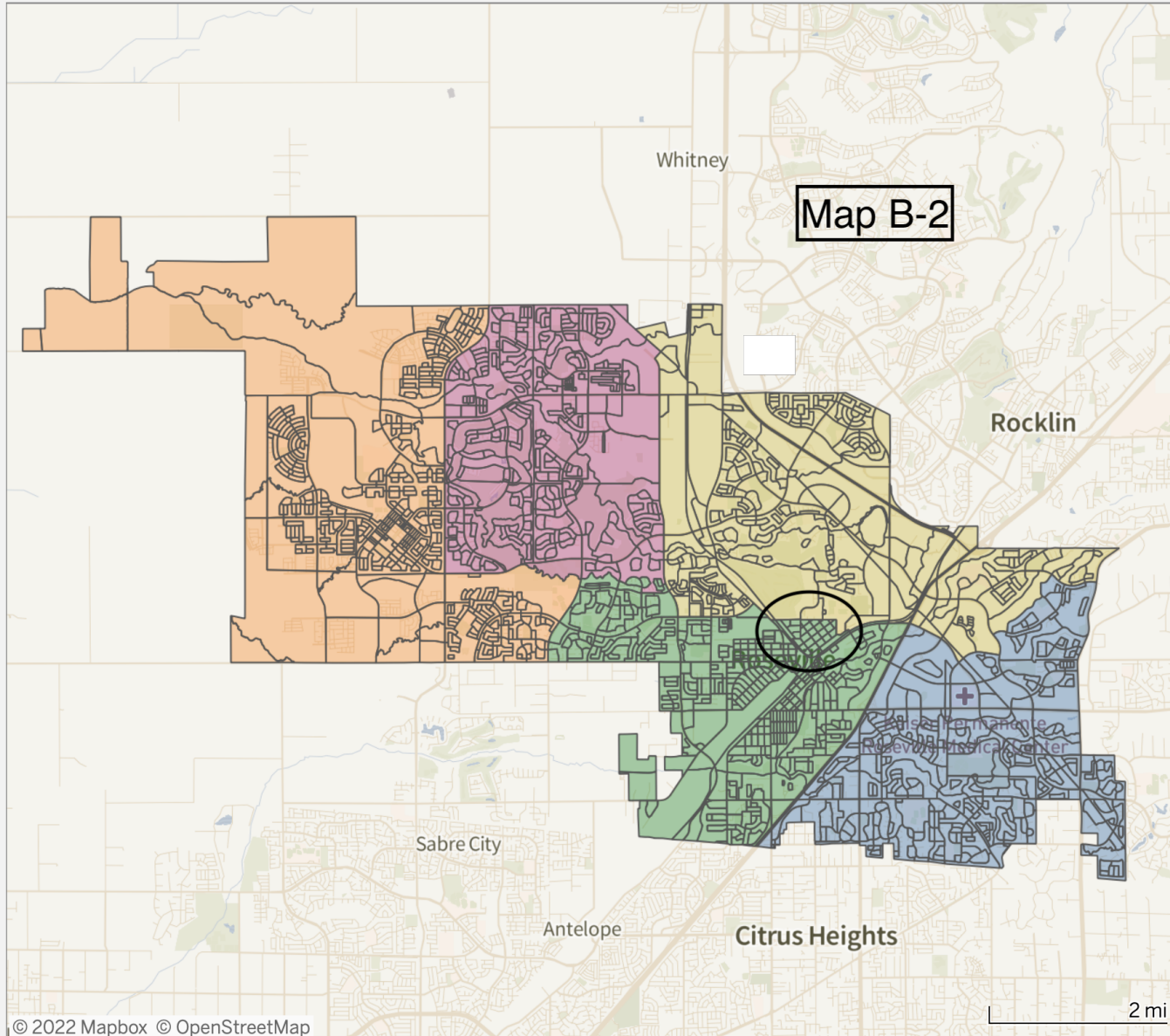
Choose population data source

Total population

Total Deviation

7.9%

October 28, 2021: This map keeps many district boundaries in tact, while cleaning up other lines. It is generally even by population, with the deviation at 6.3%. In this map, only four neighborhood associations are shared by two districts, unlike the current districts which has eleven neighborhood associations shared by different districts.



January 10, 2022

Dear Commissioners:

I would like to make two quick comments. First I draw your attention to the chart provided at your last meeting, January 6, 2022, concerning how the 6 maps address the 6 year gap in voting. As indicated, Map B is clearly the map that disenfranchises the least amount of voters. Every 10 years, with shift in district boundaries, there will be some displacement but it should be minimized as much as possible while keeping the focus on the priorities in selecting the district boundaries.

Second, I want to address the idea that was discussed that a district representative will be my representative. The only thing that districts provide is the guarantee that the 5 councilmembers are evenly distributed across the 5 geographical areas within the city. The city will still function as a city council/manager form of government as outlined in the charter. Each district councilmember will have no more or no less influence on city governance and they will all act in the best interest of Roseville. Even now, councilmembers are spread throughout the community and attend events and answer questions and concerns from other districts, not just the one from which they are elected.

Thank you for your hard work.

Richard Roccucci

Help shape the future of City Council district maps and boundaries

Every ten years, U.S. Census data is used to redraw the City of Roseville's City Council district boundaries. This ensures that districts are properly balanced to account for changes in population. The Roseville Independent Redistricting Commission wants to hear from you on how these boundaries should be drawn.

Please complete this form to tell the Independent Redistricting Commission about your thoughts on the six (6) draft maps they have selected for further consideration. We also want to hear about your community of interest because keeping communities of interest together is a high-ranking criteria in the redistricting process. Thank you for your input and participation!

Which draft map do you think best serves the interests of the residents of the City of Roseville?

Draft Map A

Draft Map B

Draft Map C

Draft Map D

Draft Map E

Draft Map F

Please describe what you like or do not like about the draft map(s) you selected above:

What is a Community of Interest?

A Community of Interest is a group of people in the same geographically-definable area who share common social and economic interests. Some examples of Communities of Interest are:

- Senior citizens
- College students living near campus
- People who live downtown or in a neighborhood
- Residents who share a common language
- People that use the same transportation systems

Document Your Community of Interest

1. What are the common interests in your community? Describe how they are important.

2. Explain the geographical location of your community of interest. What are the physical boundaries?

3. What is the reason your community of interest should be considered in the redistricting process?
Please describe how the redistricting process could have an impact on your community.

4. What else would you like to tell us about your community?

What Can You Do to Further Participate in the Redistricting Process?

1. Provide your comments by completing this worksheet and returning it by email to the Roseville City Clerk Department at cityclerk@roseville.ca.us or by dropping off a hard copy to the City Clerk at 311 Vernon Street, Roseville, CA 95678 or attending a public hearing and providing your comments to the Independent Redistricting Commission.
2. Attend one of the City of Roseville Independent Redistricting Commission public meetings. Times and locations of all meetings can be found on the City's redistricting website at: [roseville.ca.us/redistricting](https://www.roseville.ca.us/redistricting)



Send an email:
cityclerk@roseville.ca.us



Meet in person: Call
916-774-5200 to make
an appointment



Mail: Roseville City Clerk
311 Vernon Street,
Roseville CA 95678

Questions or comments?

We want to hear from you. Email the City of Roseville Independent Redistricting Commission at cityclerk@roseville.ca.us or visit our webpage at: [roseville.ca.us/redistricting](https://www.roseville.ca.us/redistricting)

Help shape the future of City Council district maps and boundaries

Every ten years, U.S. Census data is used to redraw the City of Roseville's City Council district boundaries. This ensures that districts are properly balanced to account for changes in population. The Roseville Independent Redistricting Commission wants to hear from you on how these boundaries should be drawn.

Please complete this form to tell the Independent Redistricting Commission about your thoughts on the six (6) draft maps they have selected for further consideration. We also want to hear about your community of interest because keeping communities of interest together is a high-ranking criteria in the redistricting process. Thank you for your input and participation!

Which draft map do you think best serves the interests of the residents of the City of Roseville?

Draft Map A

Draft Map B

Draft Map C

Draft Map D

Draft Map E

Draft Map F

Please describe what you like or do not like about the draft map(s) you selected above:

What is a Community of Interest?

A Community of Interest is a group of people in the same geographically-definable area who share common social and economic interests. Some examples of Communities of Interest are:

- Senior citizens
- College students living near campus
- People who live downtown or in a neighborhood
- Residents who share a common language
- People that use the same transportation systems

Document Your Community of Interest

1. What are the common interests in your community? Describe how they are important.

2. Explain the geographical location of your community of interest. What are the physical boundaries?

3. What is the reason your community of interest should be considered in the redistricting process?
Please describe how the redistricting process could have an impact on your community.

4. What else would you like to tell us about your community?

What Can You Do to Further Participate in the Redistricting Process?

1. Provide your comments by completing this worksheet and returning it by email to the Roseville City Clerk Department at cityclerk@roseville.ca.us or by dropping off a hard copy to the City Clerk at 311 Vernon Street, Roseville, CA 95678 or attending a public hearing and providing your comments to the Independent Redistricting Commission.
2. Attend one of the City of Roseville Independent Redistricting Commission public meetings. Times and locations of all meetings can be found on the City's redistricting website at: [roseville.ca.us/redistricting](https://www.roseville.ca.us/redistricting)



Send an email:
cityclerk@roseville.ca.us



Meet in person: Call
916-774-5200 to make
an appointment



Mail: Roseville City Clerk
311 Vernon Street,
Roseville CA 95678

Questions or comments?

We want to hear from you. Email the City of Roseville Independent Redistricting Commission at cityclerk@roseville.ca.us or visit our webpage at: [roseville.ca.us/redistricting](https://www.roseville.ca.us/redistricting)

Six, Katrina

From: mariannenish <mariannenish@gmail.com>
Sent: Thursday, January 13, 2022 10:51 AM
To: City Clerk
Subject: Redistricting Maps

EXTERNAL: This email originated from outside of the organization. Do not click on any links or open attachments unless you recognize the sender and know the content is safe.

Good morning,
My preferences are maps E or F.
Thank you,
Marianne Nishimura
Roseville, CA 95661

Sent from my T-Mobile 5G Device



ROSEVILLE INDEPENDENT REDISTRICTING COMMUNICATION

Title: Upcoming Redistricting Meeting Schedule
Joe Mandell 916-774-5235 jmandell@roseville.ca.us
Contact: Helen Dreyer 916-774-5356 hdreyer@roseville.ca.us

Meeting Date: 1/18/2022
Item #: 5.3.